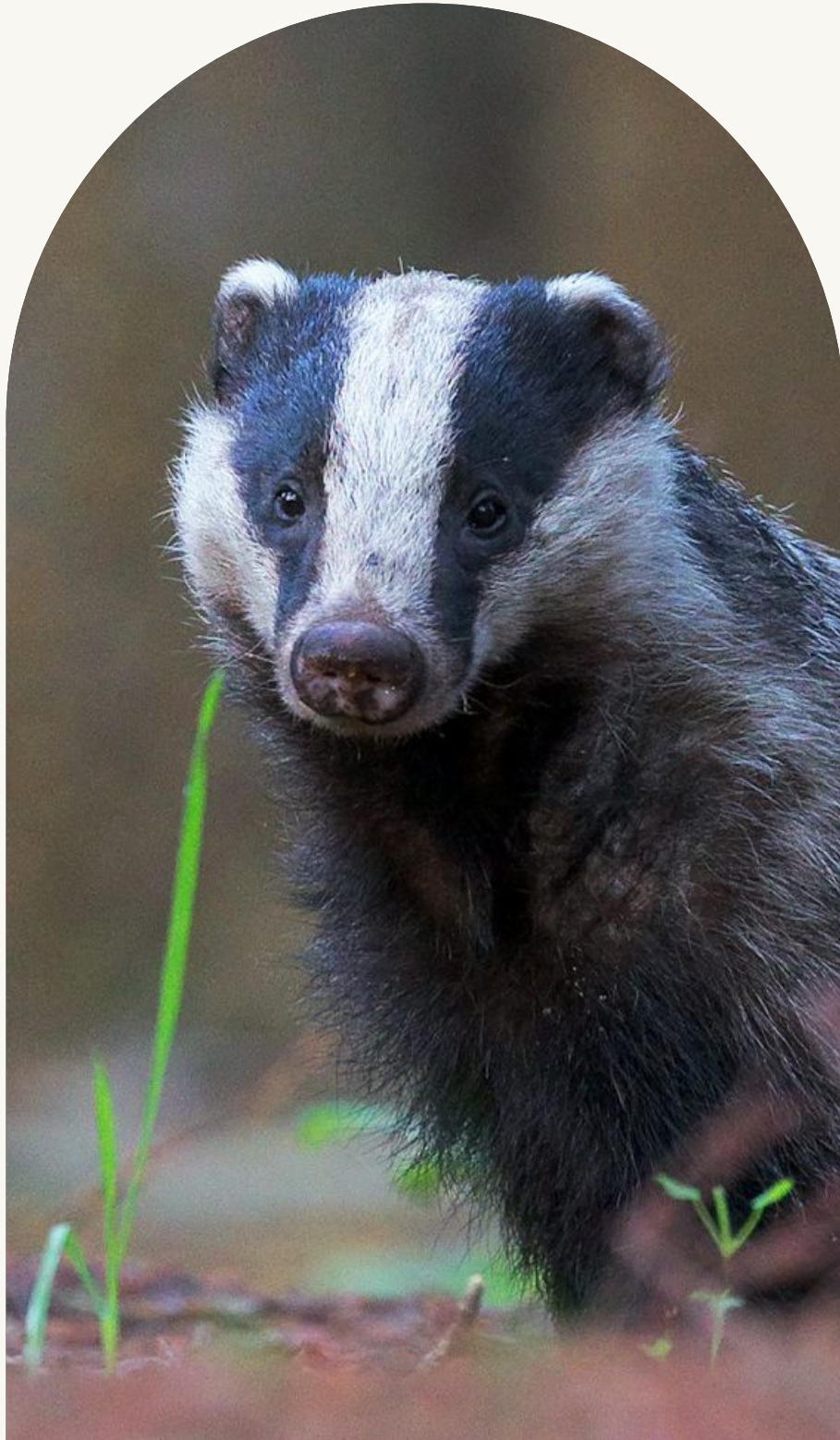


# EVENTS & RETREATS

SEPTEMBER 2025 - JUNE 2026



ASHBURNHAM

PLACE



# WELCOME

Discover the array of events we have to offer in 2025/2026 at Ashburnham Place, a place where individuals from diverse backgrounds have found solace and inspiration for over six decades.

Our events, led by talented speakers, provide an opportunity to delve into fresh expressions of worship and faith, as well as to deepen your understanding and connection with God.

At Ashburnham Place, you will be surrounded by stunning natural beauty, with woodland walks, serene lakes, and tranquil night skies providing a peaceful backdrop for reflection and renewal. Our events are designed to cater to a wide range of interests and backgrounds, with the hope that all who attend will be equipped in their spiritual journey.

We invite you to become a part of the Ashburnham Place story and look forward to welcoming you to this sacred corner of East Sussex.



Annie Mackenzie  
Events Manager

## CONTACT US

Ashburnham Christian Trust  
Ashburnham Place  
Battle  
East Sussex  
TN33 9NF  
United Kingdom

Reception/Bookings Office is open  
Tuesday – Sunday 9am – 4pm  
Monday – Closed

Telephone: 01424 892244  
Book online at  
[www.ashburnham.org.uk/events](http://www.ashburnham.org.uk/events)

Follow us  
@ashburnhamplace



## Ashburnham Christian Trust provides hospitality and home to groups and individuals from the broadest expression of the Church.

As such our hosted events reflect a breadth of theological views and standpoints, we are not endorsing these as our own, instead attempting to provide a range of retreats that encompass some of the glorious diversity within the body of Christ.

### Day event pricing

Pricing for our Day events are based on the number of meals and refreshments provided during the event day, and if any materials are provided. Which is why you will find some of our day event prices differ.

### Children and youth

Please note that some events have been intentionally restricted to adults, and we haven't listed children/youth prices. However, where children and youth are included for an event, you will find listings of significantly reduced pricing. Please note that child/youth pricing assumes an adult will be sharing. Ages 0-4 are FREE to those events that include children.

### Group bookings

If you would like to book a group of nine people or more on any of our events, to book and be paid for at the same time, please contact our bookings team on 01424 892244 for group booking prices.

### Soaking worship

As part of our 'Worship Wednesday' here at Ashburnham Place, we enjoy hosting a 'Soaking Worship' session in the Prayer Centre between \*8:15 pm - 9:15 pm. We encourage Jesus encounters as you read scripture, journal, dance or rest.

\*Time or venue may occasionally change.

### Wifi

We offer Wi-Fi in all the conference rooms and guest public areas. However, due to the

size of the site we do not guarantee Wi-Fi coverage in the bedrooms, although this is possible in some of the rooms.

### Mobile signal

As with the WiFi, we cannot guarantee mobile coverage across the site, especially as receiving signal can be highly dependent on a guest's network provider. In our experience, the best signal can be found in the Welcome Lounge (near Reception), the Front Terrace, and in some of the meeting rooms at the front of the building. Coverage in the bedrooms is not so good, however, and in some instances non-existent. So you need to be aware that you may not get any signal in many areas of the building and grounds. We realise guests will on the odd occasion need to make an urgent call, and we can generally facilitate this from Reception via landline, if no signal is available. Please note these should be for emergencies only, and not for general day-to-day or social calls, and will need to be during Reception open hours.

### Prayer

Praying alone is so important, but sometimes we all really need someone else to pray with us. We are pleased to be able to offer prayer ministry sessions for guests. This will be with two or more of our trained prayer ministers who are part of the Ashburnham Place community. Please enquire at reception to arrange a session.

Good news! The prices listed in this brochure are all-inclusive, including accommodation for residential guests, and event meals and refreshments for all ticket types, and for the days and times shown. We offer residential event packages with en-suite rooms, which can be booked on a single or double occupancy basis. Please note that the prices listed in this brochure are for single occupancy, along with details of savings if you were to book as double occupancy (two sharing). Day event prices are non-residential and include all event meals and refreshments for the period shown.

Please note that events are available on a book in advance basis only and bookings will generally close about 3-5 days prior to an event. We are not generally able to

## Accessible and ground floor rooms

### Accessible rooms

Please note that we have limited accessible rooms available for booking. If you require this facility, we would ask you book well in advance to avoid any disappointment. These rooms do book up quickly.

### Ground floor rooms

Please also note that our ground floor standard rooms may have a few steps up for access. If you require a ground floor room, again, we suggest you book early, as these rooms go quickly. Our rooms are booked on a first come first served basis, and if you don't give a preference at the time of booking, you could be allocated a first floor room. So it's really important you give us all the information needed at the time of booking.

### Carer or helper

Please note that whilst we will always be as helpful and accommodating as we can for those less able guests attending our events,

include guests who turn up on the day unannounced on our events. Our desire is to keep pricing as competitive as possible; however, as some event costs are much higher than others, due to the materials and services we provide as part of the event, you will see that we charge extra for some.

An example of this is where we provide all materials and equipment for our art/creative events, so guests don't have to bring this with them, and it also makes an opportunity for novices to try something new, without purchasing all the equipment..

Our bedrooms include bed linen, towels and tea/coffee making facilities, and have hair dryers.

guests booking must be able to move about the centre and care for themselves. We are unable to give care provision, and any guest, or relative, booking, and where you feel extra assistance is needed for mobility or medical needs, you should consider how you or any guest or relative booking will cope.

Anyone needing mobility or medical needs assistance will therefore need to ensure they bring someone who will be solely responsible to help them. In this instance, please request either, double occupancy (shared room), or a next-door room if more suitable, when booking a Carer/helper in, whichever is more appropriate. We will give a 50% discount to a person who comes as your assigned Carer/helper. Please read the events descriptions thoroughly to see if the event is suitable. For example, one event will require guests to stand for long periods and therefore will be unsuitable for those unable to do this.



## Events Cancellation

Whilst we do, all within our power, to ensure our events proceed as programmed, inevitably things happen, and we have in the past needed to cancel events. Where this has happened, it has been due to speaker illness, where we can't get a replacement, or due to lack of bookings to make it viable. In the same way, we understand that there will be times where guests will also need to cancel their booking, and so we have created the following cancellation policy, to clarify what will happen in these situations.

### Cancellation by us

Ashburnham Place reserves the right to modify the programme of any event up to the day of the event.

If 3 weeks prior to the event, guest numbers are low, Ashburnham Place will contact you to advise of its possible cancellation, and to tell you what would happen and when.

If unforeseen circumstances cause Ashburnham Place to cancel an event up to 3 days prior to the event, we shall inform you as soon as possible and offer you a full refund and the cost of any pre-booked travel expenses, on production of payment receipts.

### Cancellation by you

If you wish to cancel a booking, please note the following cancellation conditions:

- In the event of cancelling your booking up to 6 weeks before the start/arrival date of the event, the deposit is non-refundable.

- For guests who cancel within six weeks of

the start/arrival date of the event the full cost is non-refundable.

### Exceptional circumstances

If due to exceptional circumstances you cannot attend a booked Ashburnham Place event and do not wish to cancel, but would like to transfer to another future event, please contact our bookings office on 01424 892244 or [bookings@ashburnham.org.uk](mailto:bookings@ashburnham.org.uk) who will assess each request subject to its own individual circumstance and the availability of the future event.

### Exceptions

If you wish Ashburnham Place to consider exceptional circumstances, email us at [bookings@ashburnham.org.uk](mailto:bookings@ashburnham.org.uk)

Please note

We strongly recommend that you take out personal holiday insurance to cover any cancellation fees.

## Contact us

For booking or more information please visit the website at [www.ashburnham.org.uk/events](http://www.ashburnham.org.uk/events)

## Open hours

### Tuesday

Sunday 9am - 4pm

### Monday

Not open

### Switchboard

01424 892244

### Bookings

01424 894201

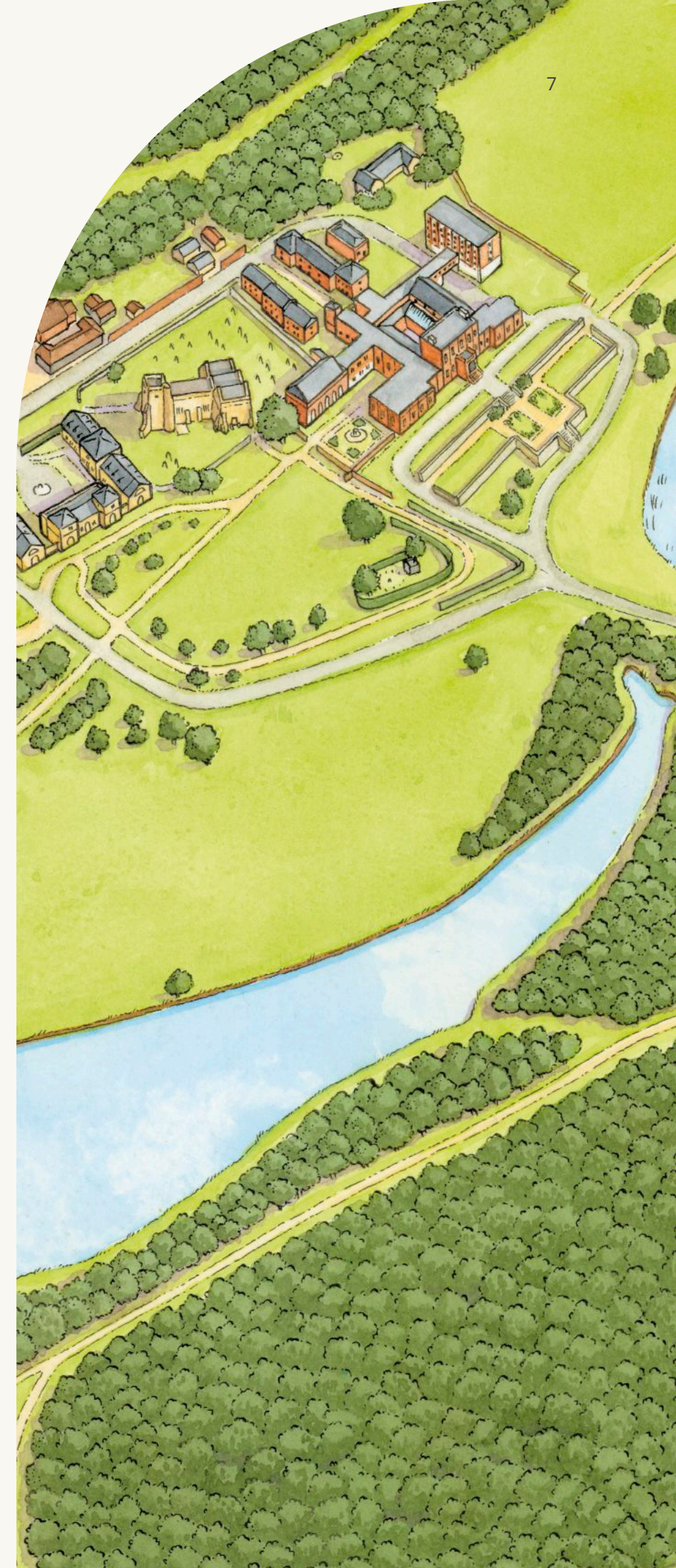
Ashburnham Place  
Battle  
East Sussex  
TN33 9NF  
United Kingdom



@ashburnhamplace  
[ASHBURNHAM.ORG.UK](http://ASHBURNHAM.ORG.UK)



BOOK NOW  
SCAN ABOVE





September



BOOK ONLINE  
OR CHECK OUT OUR  
OTHER EVENTS

CONTACT US 01424 894201  
OR BOOKINGS@ASHBURNHAM.ORG.UK

## Inspiring Women

**Tuesday 2nd 4pm - Friday 5th September 10am**

Rosie, Sally Ann, and the team warmly invite you to Ashburnham Place. These breaks are special opportunities to grow closer to God through worship, teaching, rest, and refreshment.

Come as you are, with an open heart, to look at inspiring women of faith in the Bible—women like Deborah and Esther, who showed courage and resilience; Hannah and Anna, who modelled deep prayer; Naomi and Ruth, whose relationship and trust in God shone in hardship; and Martha and Mary, who offered hospitality and worship. Be inspired, bring your journal, and join this celebration of faith-filled women.

**£348 En-Suite room per person**  
**£300 Shared room per person (ACT836)**



Rosie Morgan

## Living to Finish Well

**Tuesday 16th 4pm - Friday 19th September 10am**

The only certainty in life is that it will end. If we're unprepared, we risk leaving chaos for our loved ones. But what if we could leave this world with no regrets—leaving a legacy beyond money or possessions? How will you be remembered, and how are you shaping that legacy now? Inspired by her own experience of unexpected loss, Marjie explores these topics with optimism and practicality.

This retreat offers time to reflect, discuss, and plan—considering legacy, end-of-life issues, and how to make things easier for those left behind.

**£348 En-Suite room per person**  
**£300 Shared room per person (ACT844)**



Marjie Sutton





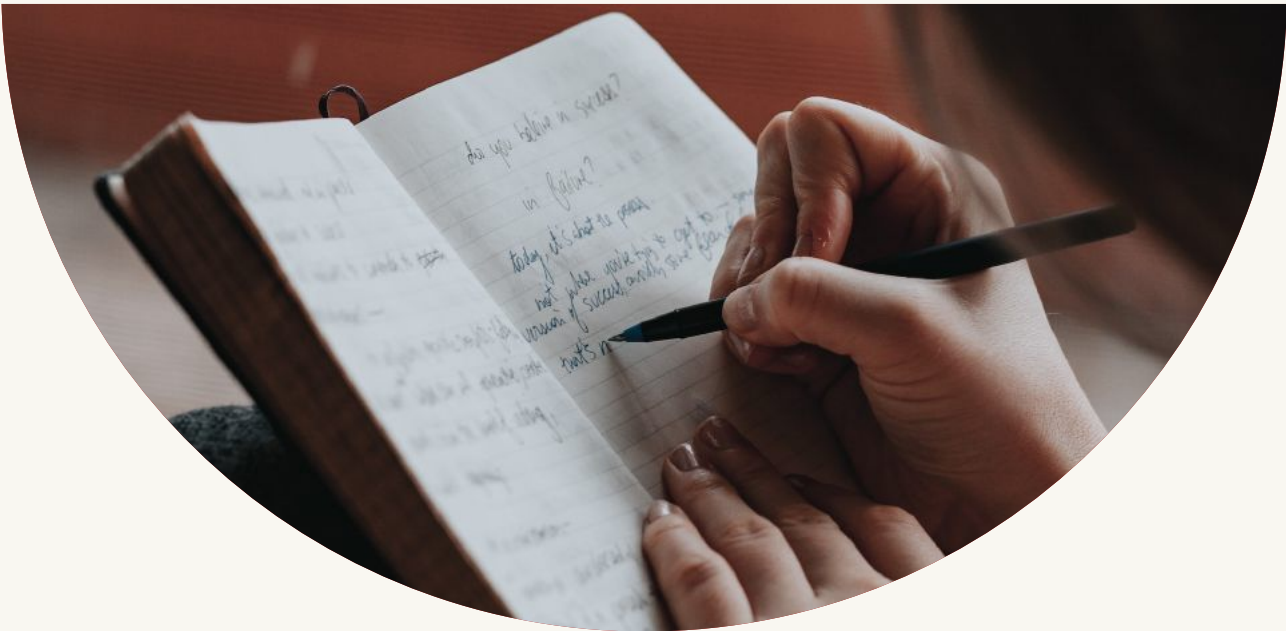
Tuesday 23rd 12pm - Friday 26th September 10am

# Creative Writing 'New & Old'

These few days provide a safe space to grow in confidence, both in writing and as a person. Because our creative God is present, each break turns out differently and far more happens than our writing. 'New and Old' are our themes for 2025. What treasures might writing draw from our memories, observations and imagination? Jesus compared some disciples to 'the owner of a house who brings out of his storeroom new treasures as well as old' (Matthew 13:52). What things and people fascinate you – shiny and new, or ancient and venerable, captured right now or imagined in the future? Do you (or your characters) prefer new, experimental trends or tried and tested older traditions? Which

words and styles, ancient or modern, might best reach people? We're very inclusive and welcome people with no writing experience and with plenty; your level of belief, education and language don't matter either. The only commitment is to write at least one sentence a day and then to share it. These aren't writing courses, though we provide plenty of inspiration through pictures, words, music and worship. We laugh, relax, listen, are heard and often make new friends. Well-published writer Chris Leonard has facilitated nearly 60 creative writing breaks at Ashburnham and elsewhere. Wonderful Celtic musicians Nigel and Julie Cameron lead our worship and help inspire us.

**£366 En-Suite room per person**  
**£309 Shared room per person (ACT814)**



**A BIG BOX OF BAKES**  
Pick up three bakes and each gift you a treat too.

<b>SCONES</b> Cheese and chutney, strawberry and cream, lemon and poppy seed	<b>£10.35</b>
<b>CAKES</b> Bakery cakes from the counter and get four	<b>£10.35</b>
<b>PASTRIES</b> Pick three pastries and get one as a gift	<b>£10.35</b>

**SMOOTHIES £3.75**

<b>WILD BERRY</b> Banana, strawberry, blueberry, raspberry, lemon juice, chia seeds, and natural sweetener	
<b>TROPICAL</b> Pineapple, mango, banana, kiwi, ginger, and natural sweetener	
<b>GREEN</b> Pineapple, apple, kiwi, lime, ginger, and natural sweetener	

**MILKSHAKES £3.75/£4.50 WITH EXTRA Toppings**

<b>OREO</b> Vanilla, Oreo, milk and Oreo	
<b>WILD BERRY</b> Banana, strawberry, blueberry, raspberry, lemon juice, and natural sweetener	
<b>BANANA AND CARAMEL</b> Banana, caramel, milk, and natural sweetener	

**THE ORANGERY**  
ASHBURNHAM PLACE

OPEN  
Tuesday – Sunday:  
10.30am – 4.00pm  
Monday - Closed

To reserve a table please call  
01424 894201 or email  
[bookings@ashburnham.org.uk](mailto:bookings@ashburnham.org.uk)

  
  
**JOIN THE ORANGERY CLUB**  
To get started scan the code, download the app and 'check in'



October



BOOK ONLINE  
OR CHECK OUT OUR  
OTHER EVENTS

CONTACT US 01424 894201  
OR BOOKINGS@ASHBURNHAM.ORG.UK

## Time Out

**Tuesday 7th 12pm - Friday 10th October 10am**

Time Out – an opportunity to relax, refresh & renew. This event will be hosted by Eve & Steve Wood & others from the Ashburnham Place family.

Relax, Refresh, Renew. With winter having made way to spring, come & relax in our peaceful surroundings, enjoying a few days away from it all. A not too early (!) bird walk is on our programme on this break. As well as offering space & time to explore the beautiful grounds of Ashburnham Place, our full & varied programme includes our morning & evening devotional times. There will be opportunities to join in a guided prayer walk, and individual prayer.

**£366 En-Suite room per person**  
**£309 Shared room per person (ACT816)**



Steve & Eve Wood

## Deep Calls to Deep

**Tuesday 28th 4pm - Friday 31st October 10am**

Join Dr Angela Walker for a new retreat at Ashburnham Place, designed to help you go deeper in your relationship with God. Discover your belonging and identity, encounter the Cross and wilderness seasons, and experience His glory-presence. Learn how God speaks, how the Father sees you, and what He wants to say to you.

Dr Angela Walker, a former consultant paediatrician, studied at All Nations Bible College and served with Iris Global in Africa. She founded THEO Ministries, focusing on healing, equipping, and empowering through retreats, courses, and books. Her passion is to see lives transformed and hearts restored.

**£348 En-Suite room per person**  
**£300 Shared room per person (ACT837)**



Dr Angela Walker



November



BOOK ONLINE  
OR CHECK OUT OUR  
OTHER EVENTS

CONTACT US 01424 894201  
OR BOOKINGS@ASHBURNHAM.ORG.UK

## The Bereavement Course



Ashburnham  
Place Team

**Tuesday 4th 4pm - Friday 7th November 10am**

This excellent course, provided by Holy Trinity Brompton Church and facilitated at Ashburnham Place, uses films and discussion groups to explore grief. Loss is a natural part of life, and processing it is vital for wellbeing. Made up of seven sessions—the last focusing on faith in grief—the course offers a safe, supportive space to help prevent mental ill-health and encourage healing. Discussion is informal and relaxed, with a manual to guide your journey.

Enjoy the peace, creative activities for reflection, and prayer ministry.  
You'll be well looked after as you process loss and move forward.

**£348 En-Suite room per person**  
**£300 Shared room per person (ACT835)**

ICONS PAINTING RETREAT

## Pilgrimage in Paint

**Tuesday 11th 12pm - Friday 14th 2pm (ACT838) and**  
**Tuesday 18th 12pm - Friday 21st 2pm (ACT839)**

Icons exert a mysteriously strong pull, whether seen in a museum or church. Have you considered painting one yourself?

This course invites anyone exploring spirituality or seeking deeper contemplation to engage with icon painting as a path to creation's mystery. Each day begins with prayer, followed by demonstrations and theory to illuminate each step. By the course's end, you will have painted an icon of the Holy Guardian Angel using the liquid egg tempera technique from the Prosopon School. You'll progress through the 21 key steps developed by Vladislav Andreyev, founder of the Prosopon School of Iconology.



Sharon Seager

**£996 En-Suite room per person**

NOVEMBER 2025



# Enneagram

**Tuesday 18th 4pm - Thursday 20th November 4pm**

A chance to come together and explore how the ancient wisdom tool of the Enneagram can bring insight and help to our relationships. We will spend time considering how a greater understanding of our ego patterns (and those of others) can enrich us and the connections, networks and relationships in our lives.

The retreat will require a level of existing enneagram understanding and will be a collaborative and creative experience. Our hope is that participants will grow in their understanding of how their type patterns impact their relationships and provide some practices and actions for everyday living.

**£232 En-Suite room per person**  
**£200 Shared room per person (ACT847)**



Rachel Gale

**WALKING THE GOOD WAY**

# Presencing and Discernment as a way of life

**Tuesday 18th 4pm - Thursday 20th November 4pm**

Join us to explore two spiritual practices: Presencing and discerning. Presencing is being fully present—awake in mind, heart, soul, and body—and open to a Greater Presence. Discernment means making wise choices, seeking the good way for rest and clarity. We'll practise meditation, prayer, stillness, and creativity, using Ashburnham Places' spiritual and natural setting to deepen connection with ourselves, each other, and the Divine.

Through shared experiences, we'll expand our capacity for wise discernment, listening for the 'still small voice' of Wisdom. This retreat aims to strengthen essential life skills, helping us leave calmer, clearer, and more able to say 'no' to distractions.

**£348 En-Suite room per person**  
**£300 Shared room per person (ACT845)**



Chris Blaklery and Karen Stefanyszyn



Rosie Morgan & Team

**ADVENT BREAK**

# Christmas Unwrapped

**Tuesday 25th 4pm - Friday 28th November 10am**

You are invited to our Advent break for women in the winter beauty of Ashburnham place. Our Advent breaks are special times for drawing close to God. There will be time for worship, teaching, rest and refreshment, as we journey towards Advent and Christmas.

Advent is a precious season as we prepare for the celebration of Christ's birth, and yet it can be a time when there are many distractions, false expectations and somehow Emmanuel – "Christ with us" can get lost in the wrappings and trappings.

Once again we will focus on the Christmas story and unwrap the greatest gift God gave in sending His son to the world He so loved. There will also be time to reflect on the past year, and time to prepare ourselves for the Christmas celebrations and the year to come. Come just as you, with an open heart and together let's unwrap Christmas as we focus on God's story and the key players in it.

Don't forget your journals and your Christmas jumpers!

**£348 En-Suite room per person**  
**£300 Shared room per person (ACT825)**



# December



BOOK ONLINE  
OR CHECK OUT OUR  
OTHER EVENTS

CONTACT US 01424 894201  
OR BOOKINGS@ASHBURNHAM.ORG.UK



Steve & Eve Wood

## Time Out

**Tuesday 2nd 4pm - Friday 5th December 10am**

Time Out – an opportunity to relax, refresh & renew. This event will be hosted by Eve & Steve Wood & others from the Ashburnham Place family.

Relax, Refresh, Renew. With winter having made way to spring, come & relax in our peaceful surroundings, enjoying a few days away from it all. A not too early (!) bird walk is on our programme on this break. As well as offering space & time to explore the beautiful grounds of Ashburnham Place, our full and varied programme includes our morning & evening devotional times. There will be opportunities to join in a guided prayer walk, and individual prayer.

**£366 En-Suite room per person**  
**£309 Shared room per person (ACT817)**





BOOK ONLINE  
OR CHECK OUT OUR  
OTHER EVENTS

CONTACT US 01424 894201  
OR BOOKINGS@ASHBURNHAM.ORG.UK

## At the Threshold

**Tuesday 20th 4pm - Friday 23rd January 10am**

In the Celtic calendar, Spring begins on 1 February—midway between the longest night and the balance of light and dark. This retreat explores the theme of thresholds: places of transition, courage and trust. As John O'Donohue wrote, "A threshold is not a simple boundary... it is a frontier."

Led by Anna Robinson (Nomad Podcast), this retreat is for those navigating a shifting faith, no longer at home where they once belonged. Rooted in contemplative Christian tradition, it offers space to slow down, listen deeply, and reflect—on soul, nature, relationships and the mystery unfolding.

**£348 En-Suite room per person**  
**£300 Shared room per person (ACT840)**



Anna Robinson

## Winter Wellness Retreat

**Friday 2nd - Sunday 4th January 2026**

Join us for a restorative Winter Wellness Retreat at Ashburnham Place, set within the stunning walled Garden. This serene getaway offers the perfect opportunity to be still, recharge, and connect with one another, nature, and the changing seasons.

Immerse yourself in a sensory experience with soothing sound, scent & movement. Enjoy healthy, naturally prepared meals that nourish the body and soul. Participate in breathwork, meditation, and various meditative practices designed to deepen your connection to yourself and the Divine.

Escape the hustle and bustle of everyday life and embrace the quietness of winter. We look forward to welcoming you

**En-Suite room per person £565.00**  
**Shared room per person £488.00 (ACT853)**



Lucy Cogley





BOOK ONLINE  
OR CHECK OUT OUR  
OTHER EVENTS

CONTACT US 01424 894201  
OR BOOKINGS@ASHBURNHAM.ORG.UK

## Stepping into the Bible

**Tuesday 10th 4pm - Friday 13th February 10am**

The Bible can be a bit of a closed book. There are some wonderful bits, like the story of Jesus, but what about the rest? Stepping Into The Bible opens it up. It offers an opportunity to get under the skin of the Bible, to understand its world, and to ask the questions that bother us. Together we make a journey exploring when and how the different Books were written, how the Old and New Testaments relate to one another, and the way the Biblical message develops over the many centuries of its writing. We explore the different levels of biblical truth – from the literal to the poetic – and what they mean for us today.

The retreat offers, in a prayerful context, tools for deeper understanding and imaginative engagement with the scriptures. Stepping into the Bible we discover it is not 'a sacred monolith', but a dynamic testament to a developing faith.

**£348 En-Suite room per person**  
**£300 Shared room per person (ACT829)**



Peter Sills

## Grief Paths

**Tuesday 10th 4pm - Friday 13th February 10am**

Grief is lonely, no one can do it for us, but we are not meant to do it alone. Using ritual and pilgrimage practices you are invited to join us in the beauty of Ashburnham Place to express and be seen in your grief. Going at your own pace and depth it is an opportunity to be with others who understand.

**£348 En-Suite room per person**  
**£300 Shared room per person (ACT850)**



Johnny Sertin



March



BOOK ONLINE  
OR CHECK OUT OUR  
OTHER EVENTS

CONTACT US 01424 894201  
OR BOOKINGS@ASHBURNHAM.ORG.UK



Chris Leonard

## CREATIVE WRITING

## Things Witnessed

**Tuesday 17th 12pm -  
Friday 20th March 10am**

Things Witnessed is a reflective writing retreat with Chris, inviting you to explore and express what you've seen and experienced in your life of faith. Through gentle, non-competitive workshops, you'll recall moments that have shaped your journey—however small or uncertain—and grow in confidence to share them. Like the Bible's honest stories from ordinary people, your lived experiences matter. Whether your faith feels hesitant or mature, your story can encourage others.

As we write and listen together, we'll discover new ways to share what really matters—stories of grace, hope, and the presence of God.

**£366 En-Suite room per person  
£309 Shared room per person (ACT828)**





BOOK ONLINE  
OR CHECK OUT OUR  
OTHER EVENTS

CONTACT US 01424 894201  
OR BOOKINGS@ASHBURNHAM.ORG.UK

## Time Out

**Tuesday 14th 12pm - Friday 17th April 10am**

Hosted by Eve and Steve Wood along with others from the Ashburnham Place team, this gentle break offers space to unwind and reconnect. With winter giving way to spring, enjoy peaceful surroundings, a not-too-early bird walk, and time to explore the beautiful grounds. The programme includes morning and evening devotions, a guided prayer walk, and opportunities for individual prayer. Whether you are seeking rest, reflection or renewal, this is a chance to pause and be refreshed in body, mind and spirit.

**£366 En-Suite room per person**  
**£309 Shared room per person (ACT818)**



Steve & Eve Wood

### CREATIVE

## 'Space' Event

**Tuesday 21st 4pm - Friday 24th April 10am**

We look forward to welcoming you to a creative retreat with Epiphany's musicians.

Epiphany's skilled team will gently guide our time together. The gatherings each morning and evening will include relaxing improvised music and reflective thoughts for each day. The rest of the time will give you opportunity to enjoy and be inspired by the beautiful surroundings of Ashburnham, have a Sound Portrait with Epiphany's musicians, or to engage in photography, art and nature explorations. Bring your musical instruments, cameras or art materials and enjoy stretching your creativity!

**£348 En-Suite room per person**  
**£300 Shared room per person (ACT851)**



Epiphany



# VISIT THE NEW SHOP

**We're excited to announce the opening of our new shop!**

Now offering a wider selection of artisan gifts and products, including fresh bread baked on-site in our bakery, local cheese, quality meats, locally sourced honey and more.

**Visit the shop to find out more**



SCAN ABOVE FOR  
MORE INFORMATION

CONTACT US 01424 892244  
OR [BOOKINGS@ASHBURNHAM.ORG.UK](mailto:BOOKINGS@ASHBURNHAM.ORG.UK)

**SUPPORTING LOCAL PRODUCE**





# Time Out

**Tuesday 23rd 12pm - Friday 26th June 10am**

Hosted by Eve and Steve Wood along with others from the Ashburnham Place team, this gentle break offers space to unwind and reconnect. With winter giving way to spring, enjoy peaceful surroundings, a not-too-early bird walk, and time to explore the beautiful grounds. The programme includes morning and evening devotions, a guided prayer walk, and opportunities for individual prayer. Whether you are seeking rest, reflection or renewal, this is a chance to pause and be refreshed in body, mind and spirit.

**£366 En-Suite room per person**  
**£309 Shared room per person (ACT818)**



Steve & Eve Wood

## GENTLE REVOLUTION

# Creating a sustainable lifestyle

**Tuesday 23rd 4pm - Friday 26th June 10am**

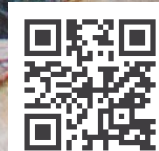
Our bodies, emotions and minds are crying out for change, yet we carry on with what we are familiar with. We need a revolution based on the values of kindness, belonging and wellbeing - an identity based on who we are, not what we achieve. A Gentle revolution, without inducing shame and guilt, sets out a roadmap for change : start small, create space, and think differently.

**£348 En-Suite room per person**  
**£300 Shared room per person (ACT848)**



Patrick Regan

# en



BOOK ONLINE  
OR CHECK OUT OUR  
OTHER EVENTS

CONTACT US 01424 892244  
OR BOOKINGS@ASHBURNHAM.ORG.UK





Noel Robinson

# Restore Worship

**Tuesday 23rd 12pm - Friday 26th June 10am**

**Join us for a few days immersed  
in the supernatural presence of God**

This special event is tailored for those of you who, in recent years, have longed for a retreat, desiring to connect with passionate, like-minded believers who share a profound love for God's presence.

We're intentionally setting aside time for you to step away, allowing yourself to enter a moment of repose, realignment, and departure with a revitalised spirit.

Amidst the spiritual landscape, there is a profound struggle for the well-being of your soul and the devotion of your affections. God is calling you to a place of rest, tailored just for you.

Noel Robinson will be hosting these impactful days, joined by guest speakers and worship leaders who will enrich your experience. Don't miss this opportunity to partake in days that promise to be transformative, offering a space where the sacred and supernatural converge.

Come, experience this celestial rendezvous, and leave not just refreshed but with a renewed spirit, ready to face the world with newfound strength and clarity.

**£TBC En-Suite room per person  
£TBC Shared room per person (ACT843)**



BOOK ONLINE  
OR CHECK OUT OUR  
OTHER EVENTS

CONTACT US 01424 894201  
OR BOOKINGS@ASHBURNHAM.ORG.UK

# July



# BE A PART OF ASHBURNHAM PLACE



TO FIND OUT MORE SCAN ABOVE OR GO TO:  
[WWW.ASHBURNHAM.ORG.UK/LEGACY/](http://WWW.ASHBURNHAM.ORG.UK/LEGACY/)

## Be a part of Ashburnham Place for future generations with a gift in your will

Regular and sacrificial giving to the work of Ashburnham Christian Trust (ACT) has been a long-standing and faithful part of your love and support of the Trust's vision to extend the Kingdom of God. By leaving a legacy you will be able to support ACT and its vision long after you have gone to be with the Lord.

TEL: 01424 894201 OR  
[BOOKINGS@ASHBURNHAM.ORG.UK](mailto:BOOKINGS@ASHBURNHAM.ORG.UK)



# BOOKING & INFORMATION

For booking or more information please  
visit the website at [www.ashburnham.org.uk/events](http://www.ashburnham.org.uk/events)

## RECEPTION/BOOKINGS OFFICE OPENING HOURS

Tuesday – Sunday 9am – 4pm  
Monday – not open

Switchboard: 01424 892244  
Bookings: 01424 894201



BOOK NOW  
SCAN ABOVE



@ashburnhamplace



Ashburnham Place  
Battle  
East Sussex  
TN33 9NF  
United Kingdom